



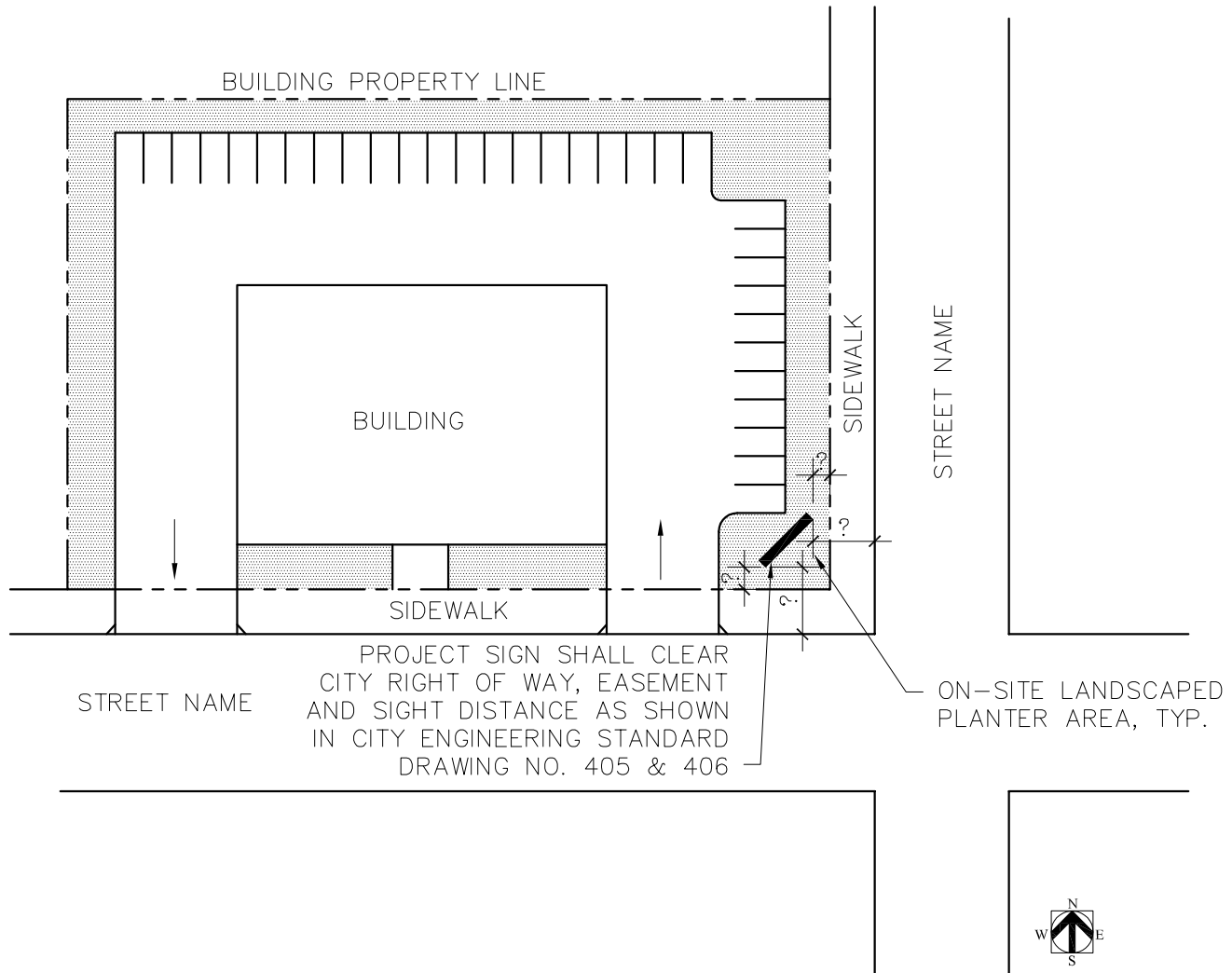
City of Milpitas

Office of Building Safety

DESIGN GUIDELINE FOR MONUMENT SIGNS



455 E. Calaveras Blvd.
Milpitas, CA 95035
408-586-3240
www.milpitas.gov



VER	DATE	BY
1	FEB 2023	ACF

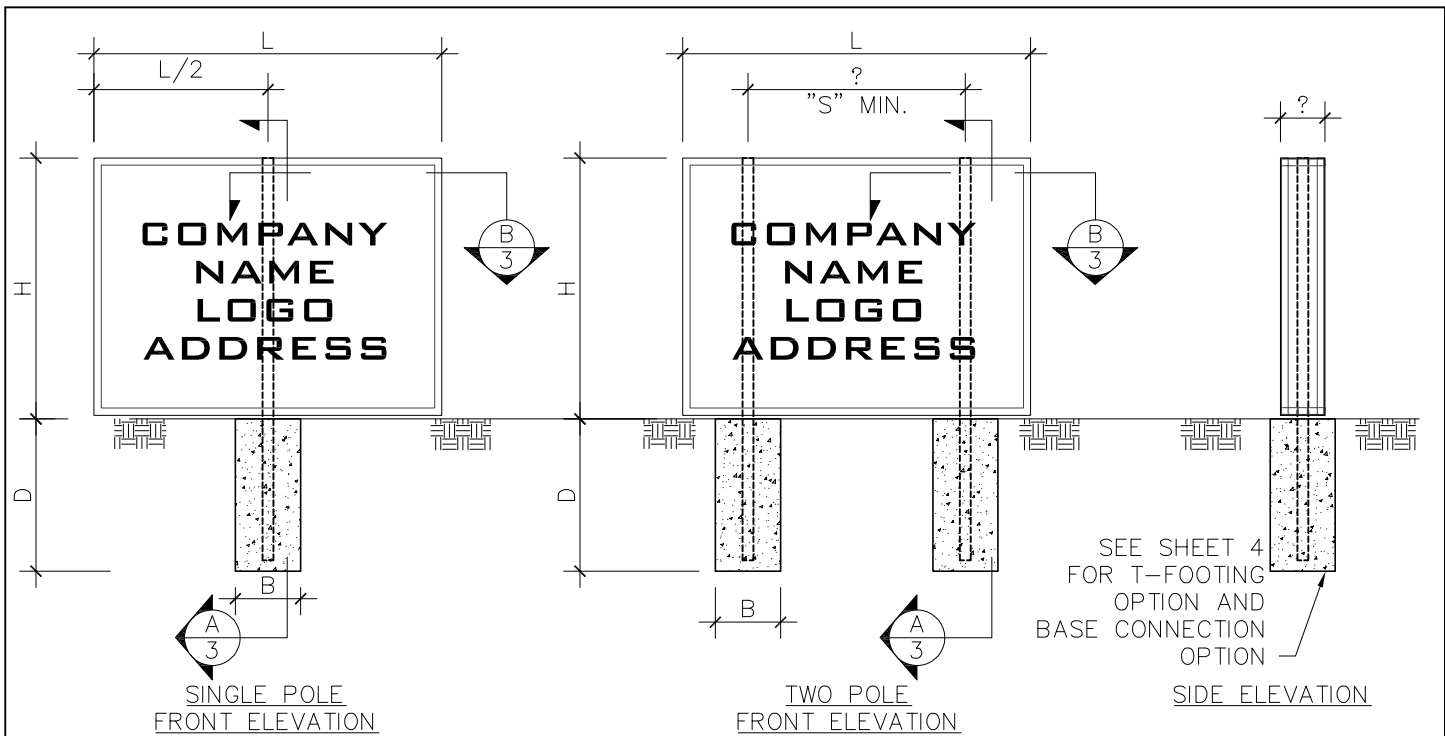
City of Milpitas

Office of Building Safety

MONUMENT SIGN

SAMPLE PLOT PLAN

SHEET
1
OF 4 SHEETS



NOTES:

1. INDICATE HEIGHT AND DIMENSIONS OF THE SIGN.
2. SPECIFY IF THE SIGN IS TO BE ILLUMINATED. IF ILLUMINATED, INDICATE THE AVAILABILITY OF (E) JUNCTION BOX NEAR THE SIGN. DIRECT-BURIED CABLES AND CONDUITS SHALL HAVE A MINIMUM 24" COVER WHEN INSTALLED UNDER STREETS, DRIVEWAYS AND PARKING LOTS AND 18" IN ALL OTHER LOCATIONS. (CEC ART.300.5).
3. THE MAX. ALLOWED LIGHTING FOR INTERNALLY ILLUMINATED SIGNS SHALL BE 12 WATTS PER SQUARE FOOT.
4. THE MAX. ALLOWED LIGHTING FOR EXTERNALLY ILLUMINATED SIGNS SHALL BE 2.3 WATTS PER SQUARE FOOT.
5. SHOW THE GRAPHIC DESIGN OF THE SIGN AND SPECIFY THE MATERIALS USED FOR THE SIGN FACE COVER.

MAX. SIGN HEIGHT "H"	NUMBER OF POLES**	MAX. SIGN LENGTH "L"	PIER DIAMETER "B"	MIN. PIER DEPTH "D"	PIER SPACING "S"
4'	1	4'	1'*	3'-0"	N/A
4'	1	6'	1'*	4'-0"	N/A
4'	2	8'	1'*	3'-0"	3'-0"
4'	2	12'	1'*	4'-0"	6'-0"
4'	1	4'	1'-6"	2'-6"	N/A
4'	1	6'	1'-6"	3'-0"	N/A
4'	2	8'	1'-6"	2'-6"	4'-6"
4'	2	12'	1'-6"	3'-0"	6'-0"
6'	1	4'	1'*	4'-0"	N/A
6'	1	6'	1'*	5'-0"	N/A
6'	2	8'	1'*	4'-0"	3'-0"
6'	2	12'	1'*	5'-0"	6'-0"
6'	1	4'	1'-6"	3'-6"	N/A
6'	1	6'	1'-6"	4'-0"	N/A
6'	2	8'	1'-6"	3'-6"	4'-6"
6'	2	12'	1'-6"	4'-0"	6'-0"
8'	1	4'	1'*	5'-0"	N/A
8'	1	6'	1'*	5'-6"	N/A
8'	2	8'	1'*	5'-0"	3'-0"
8'	2	12'	1'*	5'-6"	6'-0"
8'	1	4'	1'-6"	4'-0"	N/A
8'	1	6'	1'-6"	5'-0"	N/A
8'	2	8'	1'-6"	4'-0"	4'-6"
8'	2	12'	1'-6"	5'-0"	6'-0"

* MIN. 15" DIAMETER IF BASE CONNECTION OPTION IS USED. SEE SHEET 4.

** SEE RESPECTIVE ELEVATION (SINGLE POLE OR DOUBLE POLE) FOR CONSTRUCTION REQUIREMENTS.

VER	DATE	BY
1	FEB 2023	ACF
2	MAR 2024	HLK

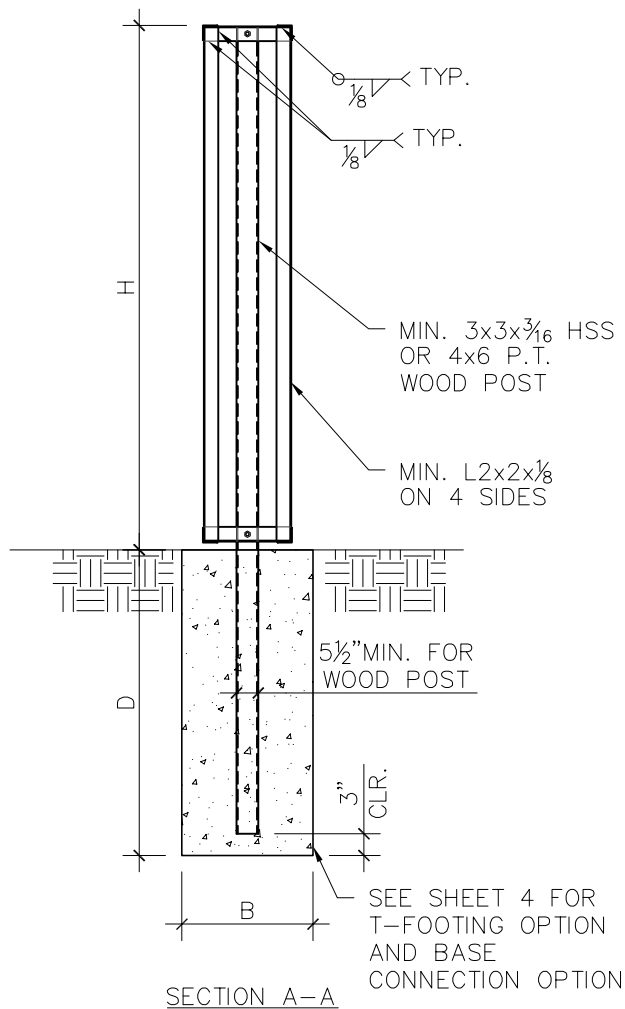
City of Milpitas

Office of Building Safety

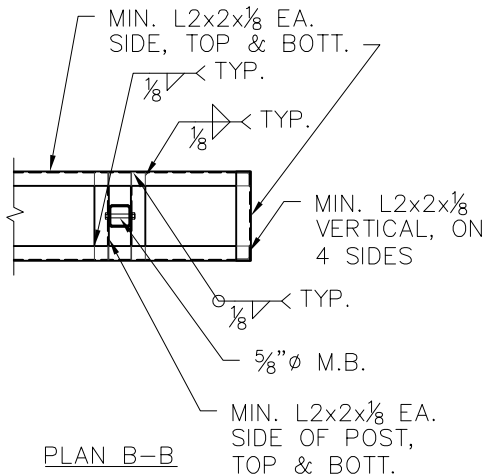
MONUMENT SIGN

SAMPLE ELEVATIONS

SHEET
2
OF 4 SHEETS



SECTION A-A



PLAN B-B

NOTES:

1. MONUMENT SIGN IN HILLSIDE AREAS SHALL BE DESIGNED BY CALIFORNIA LICENSED ARCHITECT OR ENGINEER FOR A 3-SECOND GUST MINIMUM WIND SPEED OF 95 MPH (V_{ult}) AND EXPOSURE C
2. ALL WEATHER EXPOSED STEEL MEMBERS OR FASTENERS SHALL BE HOT DIP GALVANIZED OR STAINLESS STEEL.
3. STEEL TUBES SHALL BE ASTM A500 GRADE C AND STEEL ANGLES SHALL BE ASTM A36. ALTERNATIVELY, ALUMINUM MAY BE USED IN LIEU OF STEEL AND SHALL BE ASTM 6061-T6.
4. WOOD POST SHALL BE PRESSURE TREATED DOUGLAS FIR LARCH NO. 1.
5. ALUMINUM TUBES EMBEDDED IN CONCRETE SHALL BE EFFECTIVELY COATED ON BOTH INSIDE AND OUTSIDE SURFACES WITH PROTECTIVE COATING, SUCH AS EPOXY, TO PREVENT ALUMINUM-CONCRETE REACTION.
6. WHEN ALUMINUM AND STEEL MEMBERS ARE IN CONTACT, PROTECTION SHALL BE PROVIDED BETWEEN THE TWO METALS, SUCH AS EPOXY, TO PREVENT ALUMINUM-STEEL REACTION.
7. WELDING SHALL CONFORM WITH THE LATEST EDITION OF THE AWS SPECIFICATIONS. USE E70 ELECTRODES.
8. CONCRETE COMPRESSIVE STRENGTH SHALL BE 2500 PSI MIN AND REINFORCEMENT YIELD STRENGTH SHALL BE 40 KSI MIN.
9. ANCHOR RODS SHALL BE ASTM F1554 GR. 36.
10. BASEPLATE SHALL BE ASTM A36.
11. ALL STEEL MEMBERS AND FASTENERS IN CONTACT WITH PRESSURE TREATED WOOD SHALL BE HOT-DIP GALVANIZED OR STAINLESS STEEL.
12. ALL ALUMINUM MEMBERS AND FASTENERS IN CONTACT WITH PRESSURE TREATED WOOD SHALL BE COATED WITH PROTECTIVE COATING, SUCH AS EPOXY, TO PREVENT DIRECT CONTACT.
13. THE INFORMATION PROVIDED IN THIS DESIGN GUIDE CARRIES NO IMPLIED OR INFERRED GUARANTEE AGAINST FAILURE OR DEFECTS. BY USING THIS DESIGN GUIDE, THE CONTRACTOR/OWNER ACCEPTS THE FULL RESPONSIBILITY OF RISK. ALTERNATE DESIGN MAY BE USED WHEN PROVIDED WITH WET STAMPED AND SIGNED STRUCTURAL CALCULATIONS & DETAILS BY A CALIFORNIA LICENSED ENGINEER OR ARCHITECT.

VER	DATE	BY
1	FEB 2023	ACF

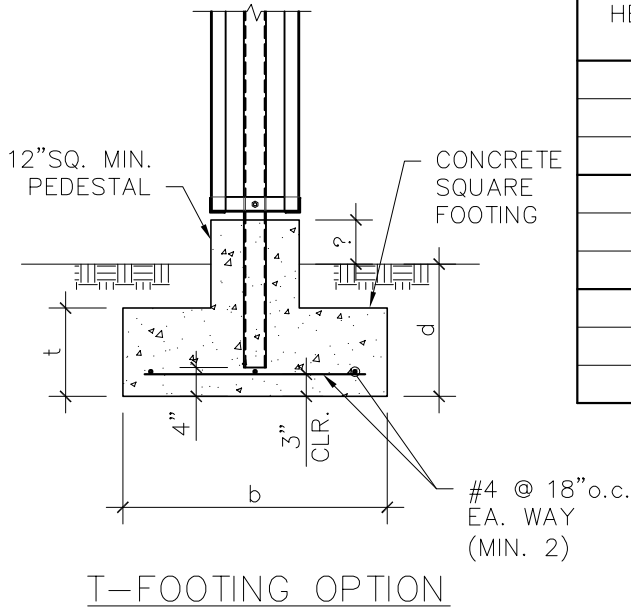
City of Milpitas

Office of Building Safety

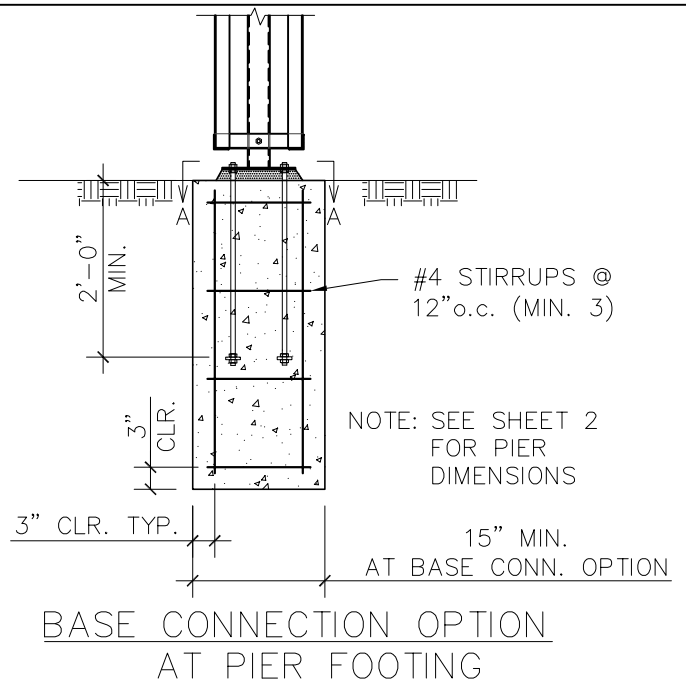
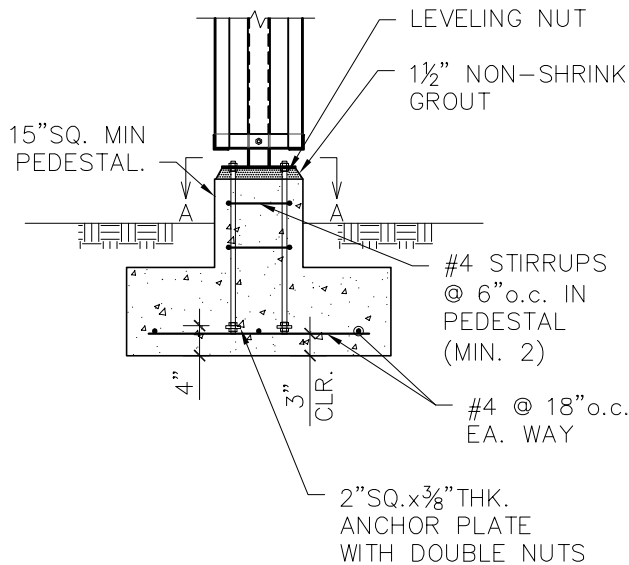
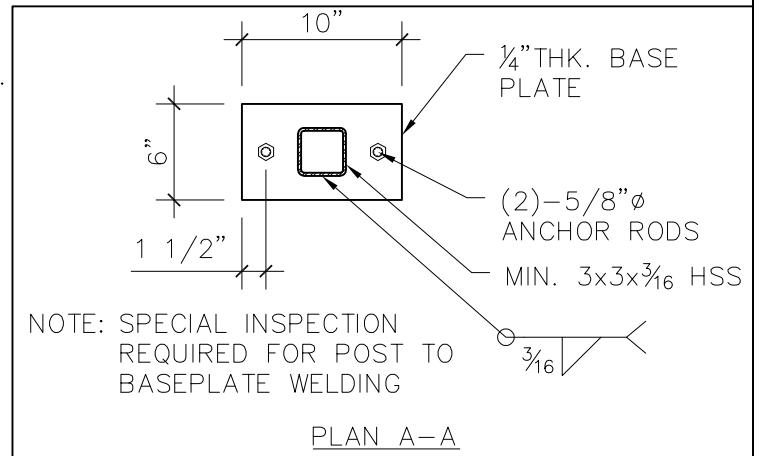
MONUMENT SIGN

SAMPLE SECTIONS AND DETAILS

SHEET
3
OF 4 SHEETS



MAX. SIGN HEIGHT "H"	MAX. SIGN LENGTH "L"	MIN. FTG. DEPTH "d"	MIN. FTG. SIZE "b"	MIN. FTG. THICKNESS "t"
4'	4'	1'-6"	2'-0"	1'-0"
4'	8'	1'-6"	2'-9"	1'-0"
4'	12'	1'-6"	3'-0"	1'-0"
6'	4'	1'-6"	2'-9"	1'-0"
6'	8'	2'-6"	3'-0"	1'-6"
6'	12'	2'-6"	3'-6"	1'-6"
8'	4'	1'-6"	3'-3"	1'-0"
8'	8'	2'-6"	4'-0"	1'-6"
8'	12'	2'-6"	4'-6"	1'-6"



VER	DATE	BY
1	FEB 2023	ACF

City of Milpitas
Office of Building Safety
MONUMENT SIGN
SAMPLE FOUNDATION OPTIONS

SHEET
4
OF 4 SHEETS